

NIVAK FLORYA - 3+1 Istanbul / Bakırköy

For Sale - Apartment 2,120,000 \$ | 225 m2 Istanbul / Bakırköy



Rooms : 3

Saloons : 1

Baths : 2

Type of Property : Apartment Flat

Property Condition : Brand New

Usage Status : Empty

Heating : Central Heating

Heating Type : Natural Gas

Balcony Number : 1

Toilet Number : 2

Deed Status : Title Deed with Floor Easement

Available to Bank Credit : Yes



İsmail Can

Phone +90 542-811 80 80

Mobile Phone +90 542-811
80 80



REALTY GALAXY

Phone +90 542-811 80 80

Mobile Phone +90 533-382
39 79

Fax +90 212-855 74 75

Yavuz Sultan Selim Bulvarı

Büyükkçekmece /

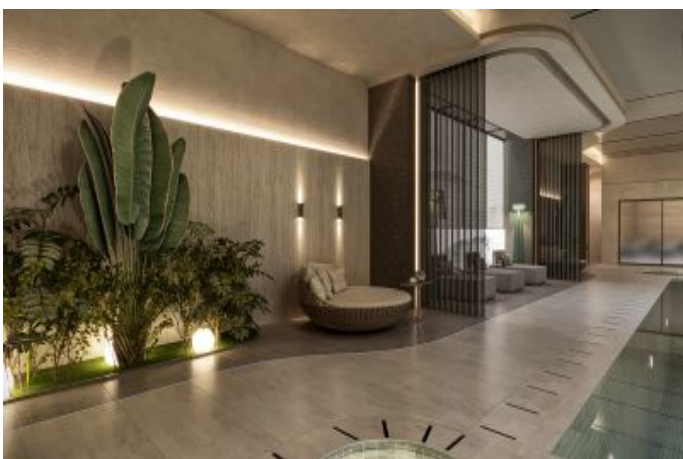
Büyükkçekmece

34528 , Istanbul

Advert No:f-494589-995

- * Internal Properties : Alarm, Balcony, White-Goods, Shower cabin, With master bathroom, Stove, Formica Kitchen, Closet, Ready made kitchen, Double glazing, Cable TV / satellite, Covered Balcony, Custom Design Kitchen, Parquet, Ceramic Ground, Security System, PVC Coated,
- * Building : Earthquake Resistant, Fiber Internet, Heat Proofing, Furniture Elevator, High Entrance, Sound Isolation,
- * Environment : Shopping Center, Kindergarten, ATM, Gas Station, Cafe, Drugstore / Medical, Entertainment Center, Fair, Elementary School, Cafeteria, Coiffure & Beauty Center, High School, Market, Massage Saloon, Game Park, Police Station, Post Office, Veterinary, School,
- * Compound : Children Swimming Pool, Fitness Center, Security, Jogging, Parking - Outdoor, Parking - Indoor, Social Facility, Gym, Tennis, Jogging / Walking Areas, Swimming Pool, Swimming Pool (Indoor), Sauna (General), Garden - Private, Security Camera,
- * Location : Near the Sea, Nature View, City View, Close to Marmaray,

Advert No:f-494589-995



Advert No:f-494589-995



E BLOK
3+1 DAİRE
TİP A



01 Giriş Holü	5.83 m ²
02 Salon	45.23 m ²
03 Mutfak	15.90 m ²
04 Ebr. Banyo	5.77 m ²
05 Ebr. Yatak Odası	26.54 m ²
06 Banyo	4.90 m ²
07 Koridor	10.04 m ²
08 Banyo	3.88 m ²
09 Yatak Odası	16.59 m ²
10 Yatak Odası	15.04 m ²
11 Balkon	12.33 m ²
12 Balkon	3.56 m ²

Net Alan (Balkon hariç) 153.37 m²
Brüt Alan* 202.71 m²
Sabga Esas Brüt Alan** 227.68 m²

*Net alan büyüme bilgisi ile ilgili ayrıntıların toplandığı vize planı sayılıdır.
**Sabga esas brüt alan büyüme bilgisi ile ilgili ayrıntıların ortaki alanlar ile ilgili kısmı payının alındığı değeri.

E BLOK
3+1 DAİRE
TİP A1-T



01 Giriş Holü	4.80 m ²
02 Salon	46.80 m ²
03 Mutfak	15.20 m ²
04 Ebr. Banyo	5.20 m ²
05 Ebr. Yatak Odası	26.80 m ²
06 Banyo	4.80 m ²
07 Koridor	9.80 m ²
08 Banyo	3.80 m ²
09 Yatak Odası	16.80 m ²
10 Yatak Odası	15.80 m ²
11 Balkon	12.80 m ²
12 Balkon	3.80 m ²

Net Alan (Balkon hariç) 142.20 m²
Brüt Alan* 192.20 m²
Sabga Esas Brüt Alan** 242.20 m²
Balkon 14.80 m²

E BLOK
3+1 DAİRE
TİP A1



01 Giriş Holü	4.80 m ²
02 Salon	45.20 m ²
03 Mutfak	15.20 m ²
04 Ebr. Banyo	5.20 m ²
05 Ebr. Yatak Odası	26.80 m ²
06 Banyo	4.80 m ²
07 Koridor	9.80 m ²
08 Banyo	3.80 m ²
09 Yatak Odası	16.80 m ²
10 Yatak Odası	15.80 m ²
11 Balkon	12.80 m ²
12 Balkon	3.80 m ²

Net Alan (Balkon hariç) 142.20 m²
Brüt Alan* 192.20 m²
Sabga Esas Brüt Alan** 242.20 m²
Balkon 14.80 m²

E BLOK
3+1 DAİRE
TİP A-T



01 Giriş Holü	4.80 m ²
02 Salon	46.80 m ²
03 Mutfak	15.20 m ²
04 Ebr. Banyo	5.20 m ²
05 Ebr. Yatak Odası	26.80 m ²
06 Banyo	4.80 m ²
07 Koridor	9.80 m ²
08 Banyo	3.80 m ²
09 Yatak Odası	16.80 m ²
10 Yatak Odası	15.80 m ²
11 Balkon	12.80 m ²
12 Balkon	3.80 m ²

Net Alan (Balkon hariç) 142.20 m²
Brüt Alan* 192.20 m²
Sabga Esas Brüt Alan** 242.20 m²
Yatak Alan (Balkon) 14.80 m²