

**SOLEA MANSION**

TURKEY / AYDIN / KUŞADASI

**Completion Date:**  
12 / 2025**Price Range:**  
1,650,000 - 2,250,000 €**Development Area:**  
1,030 m<sup>2</sup>**Opportunity | New |****Luxury Property |**

## SOLEA Mansions - A Fusion of Luxury, Nature, and Sustainability in Kuşadası

### Description:

SOLEA Mansions, an ultra-luxurious residential project by Petronet Group, redefines opulence and sustainability in the heart of Kuşadası. Nestled in lush landscapes, this exclusive development comprises 13 detached mansions, each designed to offer unparalleled privacy, comfort, and modern living.

### Key Features:

- **Expansive Green Spaces:** Private gardens ranging from 950 to 1,100 m<sup>2</sup>, enriched with regionally compatible palm, bonsai olive, banana, and lemon cypress trees.
  - **Architectural Brilliance:** A durable and modern facade combining ceramic coating, wooden teak, and aesthetic decorative elements, perfectly harmonized to create an elegant look.
  - **Private Amenities:** Each mansion features a private pool, a fire pit, a reflection pool, a winter garden, and a panoramic terrace with a jacuzzi and bar area.
  - **Smart Home Living:** Advanced systems for lighting, blinds, heating, and cooling, complemented by underfloor heating and ceiling-type air conditioning.
  - **Wellness and Entertainment:** Basement amenities include a gym, sauna, Turkish bath, cinema room, and a bedroom for ultimate relaxation and recreation.
  - **Spacious Layouts:** With a closed area of 425 m<sup>2</sup>, the 7+1 mansions are thoughtfully designed to include master bedrooms with en-suite bathrooms, dressing rooms with illuminated cabinets, and modern lacquered kitchens.
  - **Eco-Friendly Features:** Solar-powered electricity generation (GES) and electric vehicle charging stations make SOLEA Mansions a sustainable choice.
  - **Convenient Access:** Located near key attractions such as Selçuk, the Virgin Mary's House, and major airports like Bodrum and ADB.
- SOLEA Mansions promises a lifestyle beyond imagination, blending tranquility, luxury, and eco-conscious living in Kuşadası, the pearl of the Aegean. Whether you seek an investment or a serene retreat, this project delivers unmatched value.
- Embrace the future of green living at SOLEA Mansions.

**Indoor/Covered Area (m<sup>2</sup>) : 425**

**Block Number : 11**

**Land m<sup>2</sup> : 1,030**

### LOCATION :

**Near to Street, Near the Sea,**

### **INFRASTRUCTURE :**

**Earthquake Regulation Proof, Earthquake Resistant, Ground Survey,**

### **COMPOUND :**

**Solar Power, Security, Pressure Tank, Cable TV, Meeting Room, Ground Heating, Security System, Indoor Garage, Suitable for Disabled, Fire Alarm, Security Camera,**

### **CONSTRUCTION PROPERTIES :**

**Built-in White Goods Kitchen, Glass Mosaic Coated, Granite Coating, Granite Basement, Heat Proofing, High Entrance, High Ceiling, Marble Coated, Glass Coated, Sound Isolation,**

### **SCENERY :**

**Sea View, Nature View,**

### **FACILITY ACTIVITIES :**

**Children Swimming Pool, Swimming Pool, Swimming Pool (Indoor), Pool Bar,**

**ESTATE TYPES**

**1,650,000 €**

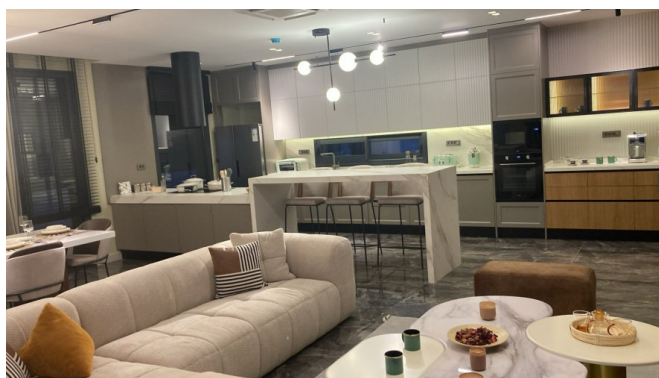
**1,100 m<sup>2</sup> , 7 + 1**  
**For Sale, Villa (4)**


**1,750,000 €**

**1,100 m<sup>2</sup> , 7 + 1**  
**For Sale, Villa (4)**


**2,250,000 €**

**1,950 m<sup>2</sup> , 7 + 1**  
**For Sale, Villa (4)**


**2,000,000 €**

**1,100 m<sup>2</sup> , 7 + 1**  
**For Sale, Villa**



